

STI-NA, No. 11-008

Sales and Technical Information, North America

1900 Airport Rd. • Monroe, NC

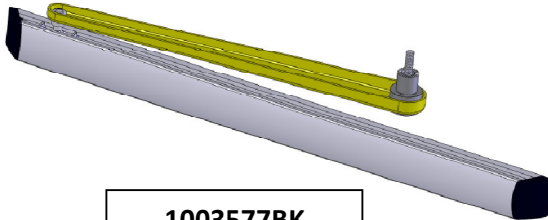
Contact: prodmaint@besam-usa.com



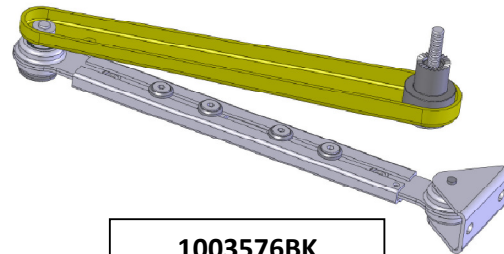
Page 1 (1)

SW100 and PowerSwing Operator Arm Update

Two new operating arms are being introduced that will obsolete all previous arms for both the **SW100** and **PowerSwing** operators. The new “**Push**” application arm, and new “**Pull**” application arms have been redesigned such that they are now compatible with either operator. Although the arms are now the same, a new extension adapter will be required when used with the PowerSwing operator. No further modifications are needed. Shipping of the new arms will begin immediately against SW100 orders. PowerSwing orders will receive the new arm once inventory is depleted. The PowerSwing hybrid arm remains unchanged.



1003577BK
(Pull Applications)



1003576BK
(Push Applications)

For service parts orders and inventory information, these new numbers apply:

SW100

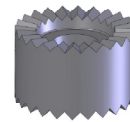
Pull- 1003577BK

Push- 1003576BK

PowerSwing

Pull- 1003577BK and 1004897(Extension Adapter)

Push- 1003576BK and 1004897(Extension Adapter)



1004897
Extension

For replacement information:

SAS-F 173099(Push) is replaced by 1003576BK + Extension 1004897

100125BK(Pull) is replaced by 1003577BK + Extension 1004897

Engineering Department

18 Aug 2011