



Door Controls USA



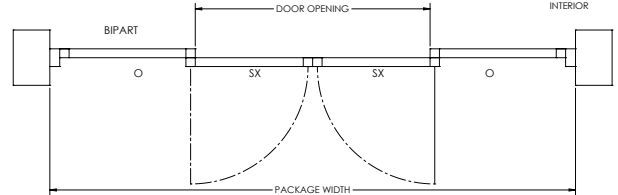
AUTOMATIC SLIDING DOOR SYSTEM

800-437-3667

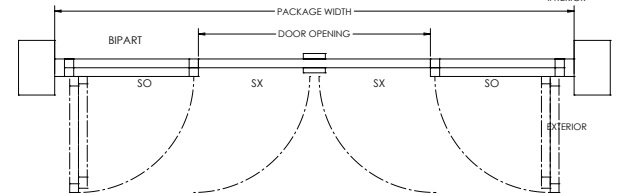


Bi-Part Slide

Fixed Sidelite



Full Breakout



See Below For Specifications

Features:

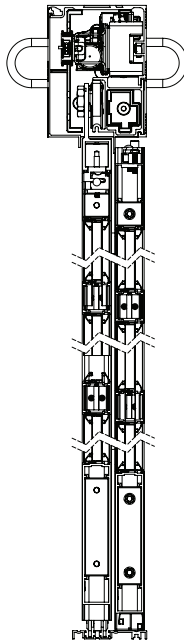
All models available in bi-part (double sliding) or single slide configurations.

**BREAKOUT:** (System is disabled when panels breakout)

- Reinforced Timing Belt
- Maximum Panel Weight - Up to 220 lb per leaf
- Door Panels: Aluminum Color
- Speed Range: (based on size & weight of the door)
- Clear Door Opening Typical Width: 3' - 6'

Door packages are custom built to fit your job requirements.

End View



SPECIFICATIONS:

HEADER SIZE: 8" (203mm) high x 6" (152mm) deep

TYPICAL HEIGHT: 7'-8" (2.3m)

TYPICAL WIDTH: Single Slide: 7' to 9' (2.1m to 2.7m)

Bi-Part: 10' to 14' (3m to 4.2m)

TYPICAL DOOR PANEL WEIGHT: Up to 220 pounds each (100kg)

DRIVE TRAIN: Molded brushed DC One Motor with gear reduction assembly

CONTROL: Microprocessor controller

SENSORS: Microwave doppler radar for motion; and active infrared with background analysis for presence

BREAKOUT: SX panel on the fixed sidelite, SX and SO panels on the full breakout

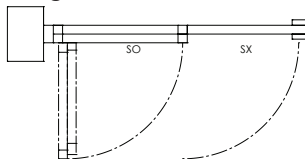
POWER INPUT: 120 VAC, Single Phase

POWER CONSUMPTION: 150W Max

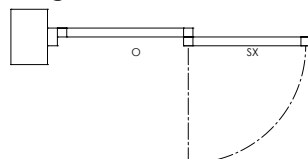
CODE COMPLIANCE: ANSI A156.10

OPERATING ENVIRONMENT: -4F to 158F (-20C to +70C) 30% to 85% relative humidity

Full Breakout Single Slide



Fixed Sidelite Single Slide





**Door Controls USA**



**AUTOMATIC SLIDING DOOR SYSTEM**

**800-437-3667**

DC Slide Automatic Sliding Door System merges advanced technology with cutting-edge engineering to provide the safest, most reliable and highest performing door systems in the industry.

The DC Slide fits in every application from high-traffic retail locations to upscale professional and institutional settings. These automatic sliding doors will accommodate your patrons in any industry, such as healthcare, retail, hospitality, municipal and distribution warehouse.

**FEATURES:**

- ▶ Characters on the screen.
- ▶ Fully compliant for speed, force, and time delay requirements of ANSI A156.10.
- ▶ Quick and easy setup and troubleshooting with onboard diagnostics.
- ▶ LEDs to indicate input state

**WARRANTY:**

One year from date of purchase from Door Controls USA, Inc.

**AVAILABLE • RELIABLE • ECONOMICAL • INNOVATIVE**



*Single Slide*



*Bi-Part Slide*

DCU016\_121620

[Parts@DoorControlsUSA.com](mailto:Parts@DoorControlsUSA.com)

[DoorControlsUSA.com](http://DoorControlsUSA.com)