

- NOTES
1. LOCKING OPTIONS INCLUDE:

– ELECTRIC SOLENOID LOCK, OR “AUTOMATIC LOCKING” SYSTEM, TO PREVENT SLIDING ACTION OF PANELS WHEN LOCKED.

– PANIC EXIT DEVICE TO ALLOW EMERGENCY EGRESS FROM CLOSED AND LOCKED WITH OR WITHOUT POWER. PANIC EXIT DEVICES ARE DISENGAGED, OR “DOGGED”, DURING NORMAL OPERATION.
2. ELECTRIC SOLENOID LOCK MAY BE FAIL SAFE OR FAIL SECURE.

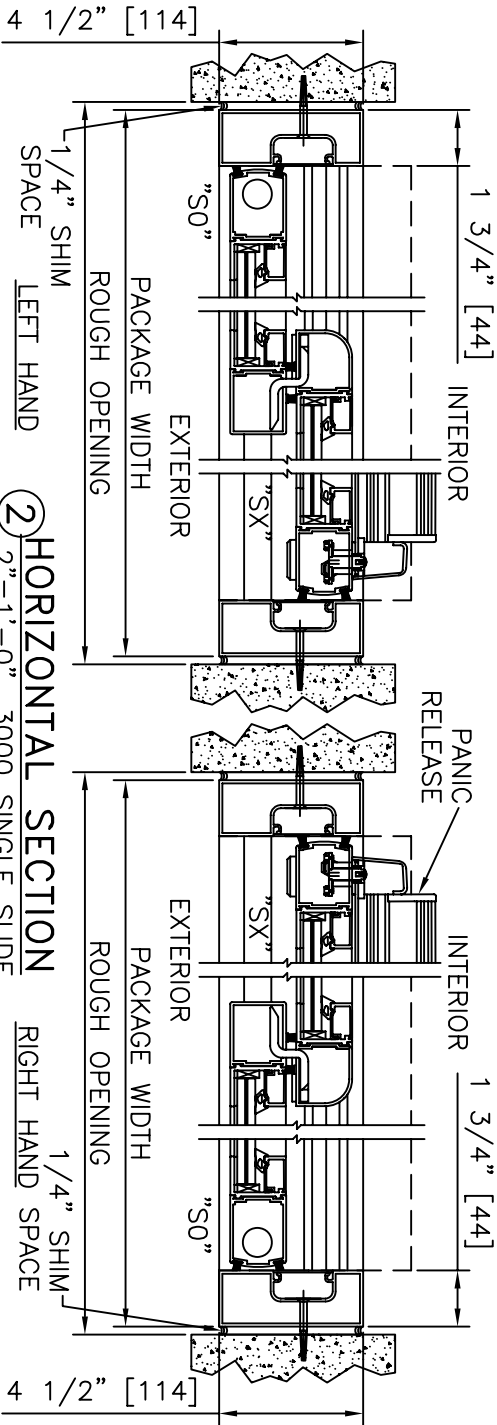
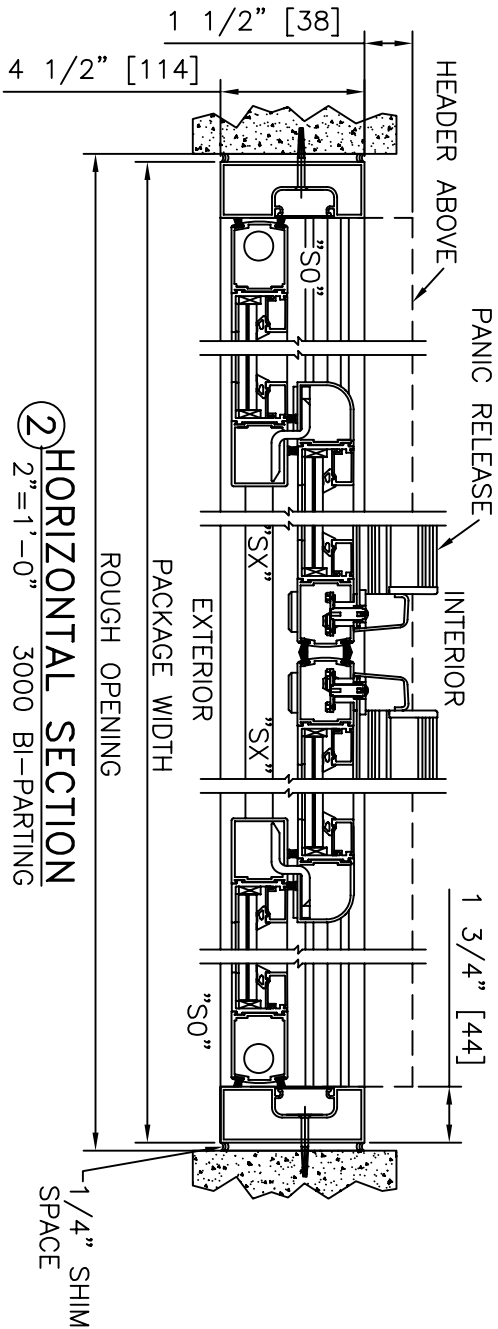
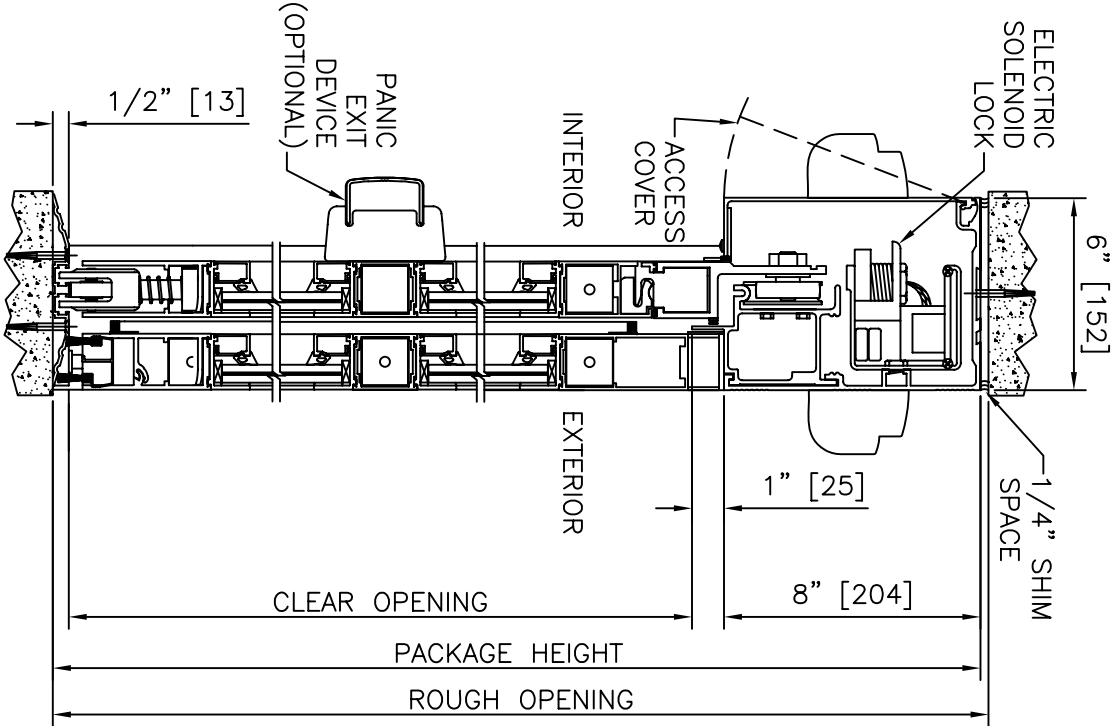
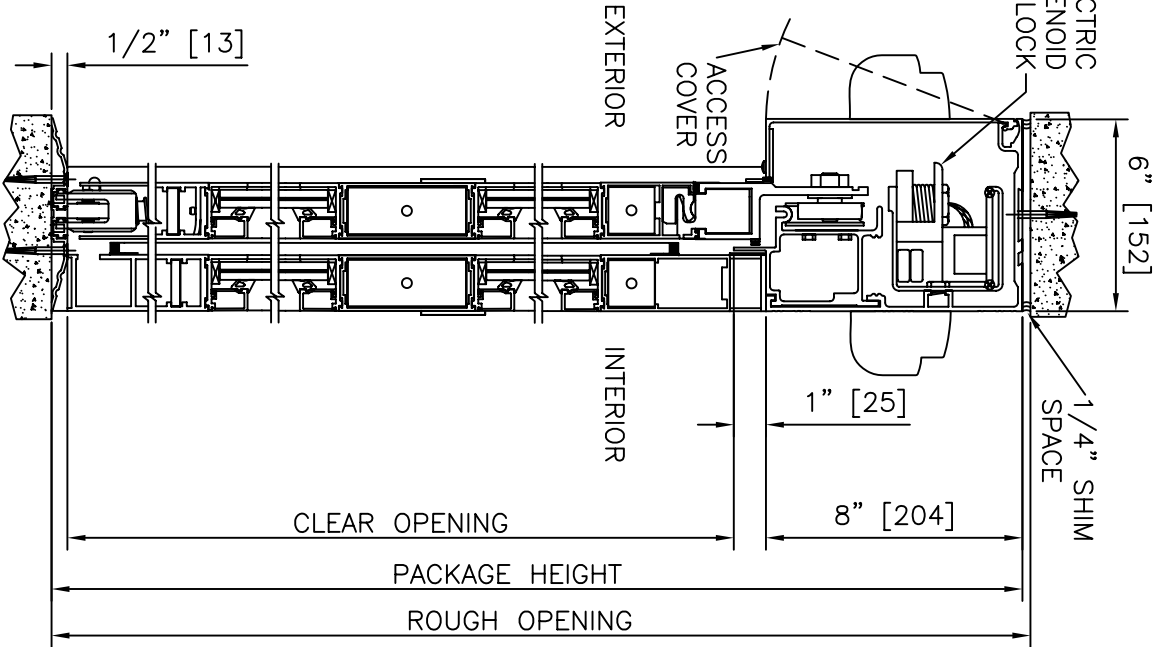
3. SEE SPECIFICATIONS FOR ADDITIONAL INFORMATION.

DURA-STORM 2000

AUTOMATIC LOCKING WITH ELECTRIC SOLENOID LOCK

DURA-STORM 3000

AUTOMATIC LOCKING WITH ELECTRIC SOLENOID LOCK (OPTIONAL PANIC EXIT DEVICE SHOWN)



LOCKING OPTIONS, IMPACT AND NON-IMPACT

DURA-STORM 2000/3000 SERIES

STANLEY Access Technologies