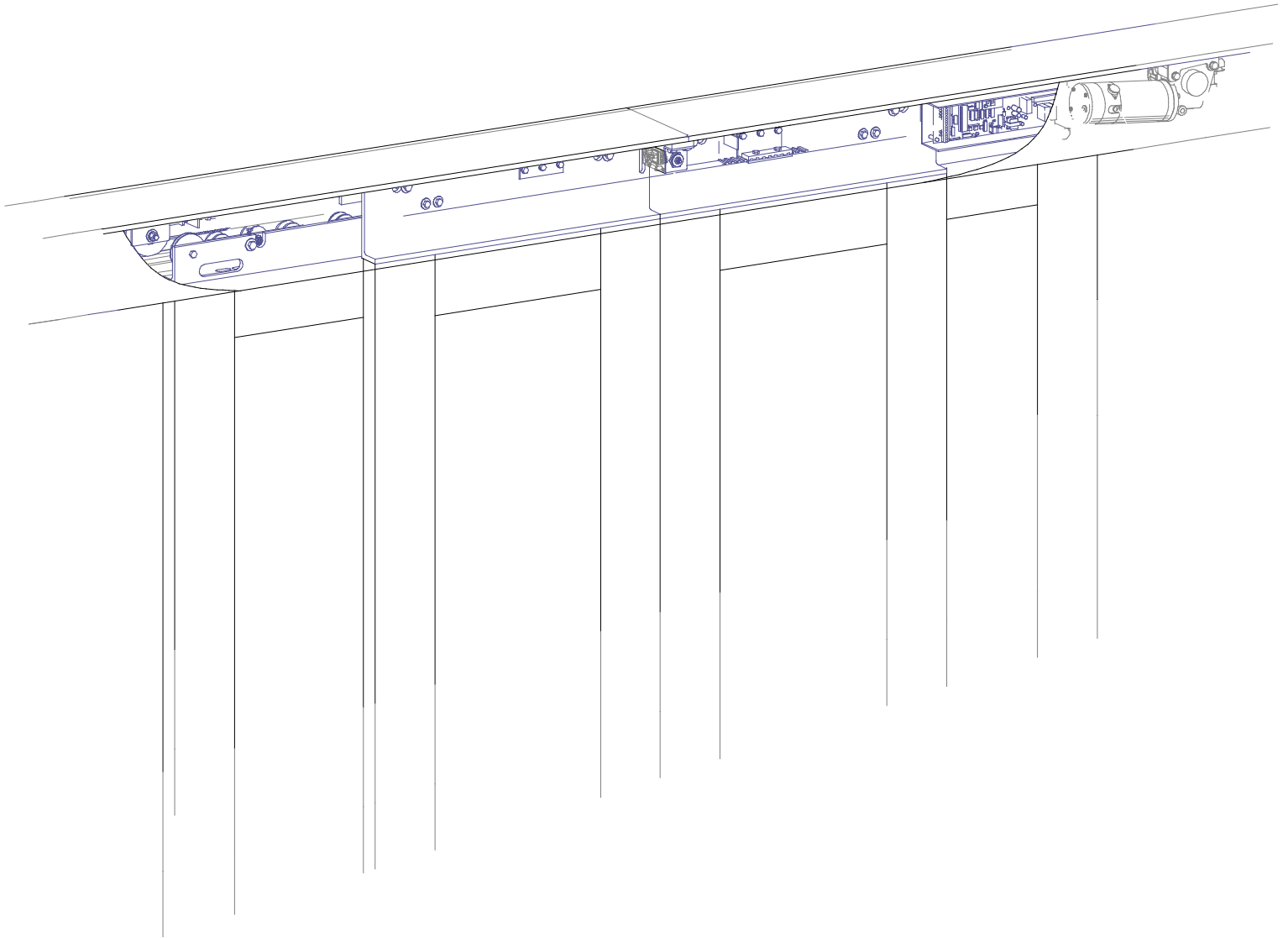


Industrial Belt Drive Telescoping Door Installation Instructions



2.147d

CONTENTS

1. Instructions to installer.....	G206.1
2. General requirements.....	G206.1
3. Track location.....	G206.2
4. Splice.....	G206.2
5. Door hanger removal.....	G206.3
6. Header mount.....	G206.3
7. Wire guide / weather strip mount.....	G206.4
8. Mount hangers to door panels.....	G206.4
9. Mount door panels.....	G206.5
10. Cable connections & door alignment.....	G206.6
11. Belt connection.....	G206.7
12. Track alignment.....	G206.7
13. Autolock & close monitor switch.....	G206.8
14. Cover.....	G206.8
15. Exploded view.....	G206.9
16. Activation and adjustments.....	G206.10

INDUSTRIAL TELESCOPING DOOR INSTALLATION INSTRUCTIONS

1. INSTRUCTIONS TO INSTALLER

- This door is to be installed by a trained and experienced AAADM certified installer with knowledge of local codes and ANSI A156.10 standards for power operated doors.
- To ensure safe and proper operation, the door must be installed and adjusted to conform to Horton Automatics recommendations, all code requirements and ANSI A156.10.
- If there are any questions about these instructions, call Horton Automatics Technical Assistance.

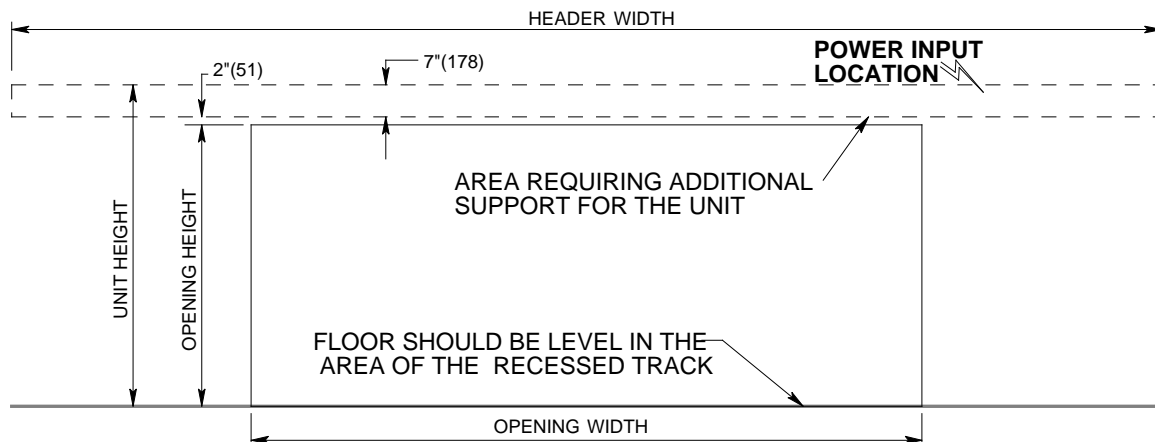
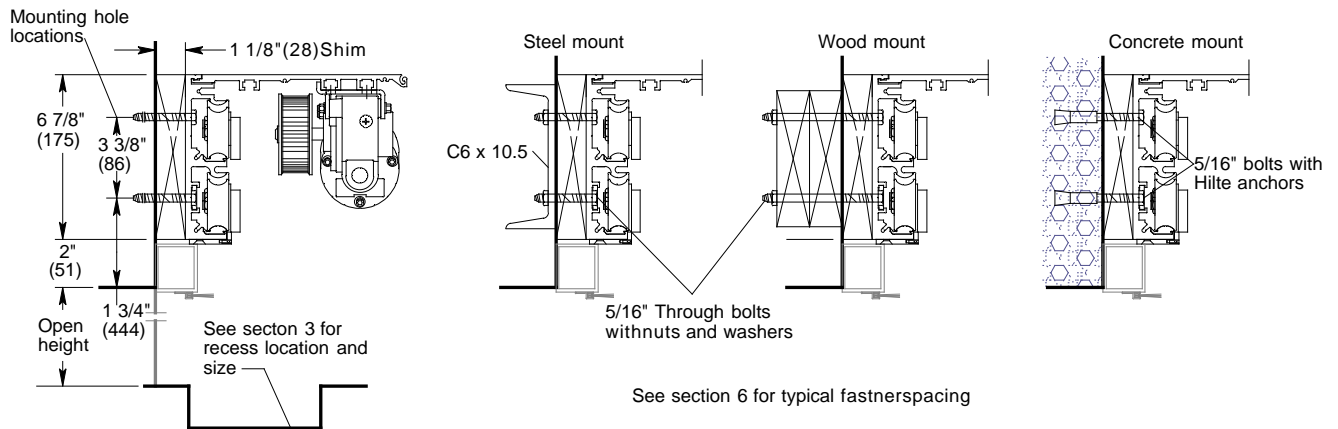
INFORMATION TO BE PROVIDED BY THE DISTRIBUTOR TO THE OWNER

- After installation instruct the owner on the safe operation of the door.
- Present the Owners Manual M300 and explain how to perform the daily safety check.
- Location of power on / off switch.
- Necessary warnings not covered in these general instructions.
- Date equipment shipped from Horton Automatics.
- Date equipment placed in service.
- Horton Automatics' invoice number for warranty reference.
- Equipment type.
- Accessories included.
- Phone number to call regarding problems or request for service.
- Give caution** to owner: if a potentially hazardous situation is suspected, the door should be taken out of automatic service until a professional inspection is made and the problem is corrected.

2. GENERAL REQUIREMENTS

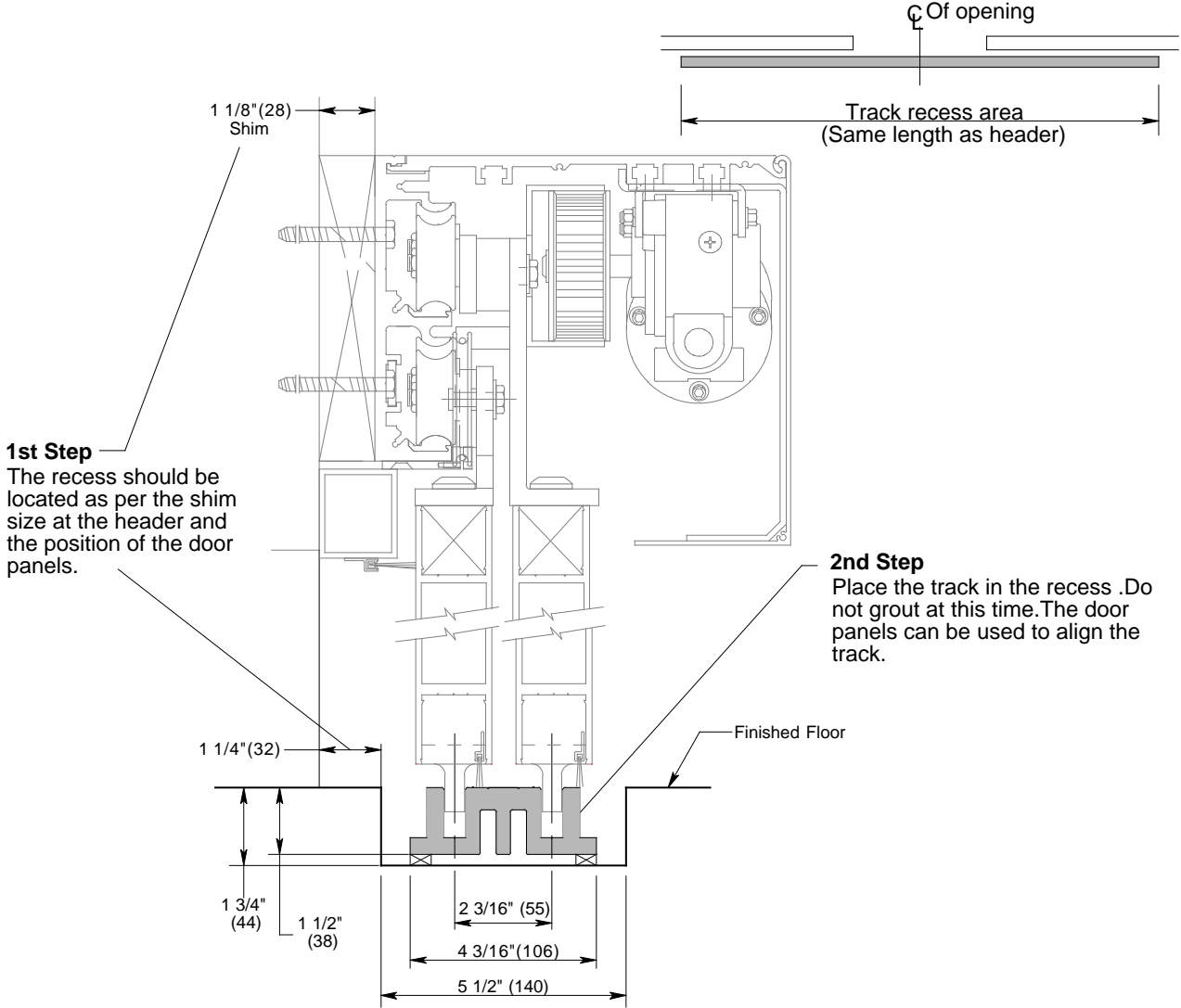
- Power: 120 VAC, 60Hz, 15 Amp service (in conduit) to the header of each unit.
- Non-North American voltages can be 240 VAC, if so be sure the operator has a 240VAC power supply.
- For remote switch locations, routing of low voltage class II wiring (in conduit) to the operator controls will be required.
- Remote switch locations should be predetermined and wired before installation begins.
- The opening must be plumb and level, including the threshold and track area.
- Provisions should be made for a recessed floor track.
- Additional support must be provided in the wall at the header mounting area.
- Door panels may be glazed before or after installation.

RECOMMENDED MINIMUM MOUNTING REQUIREMENTS



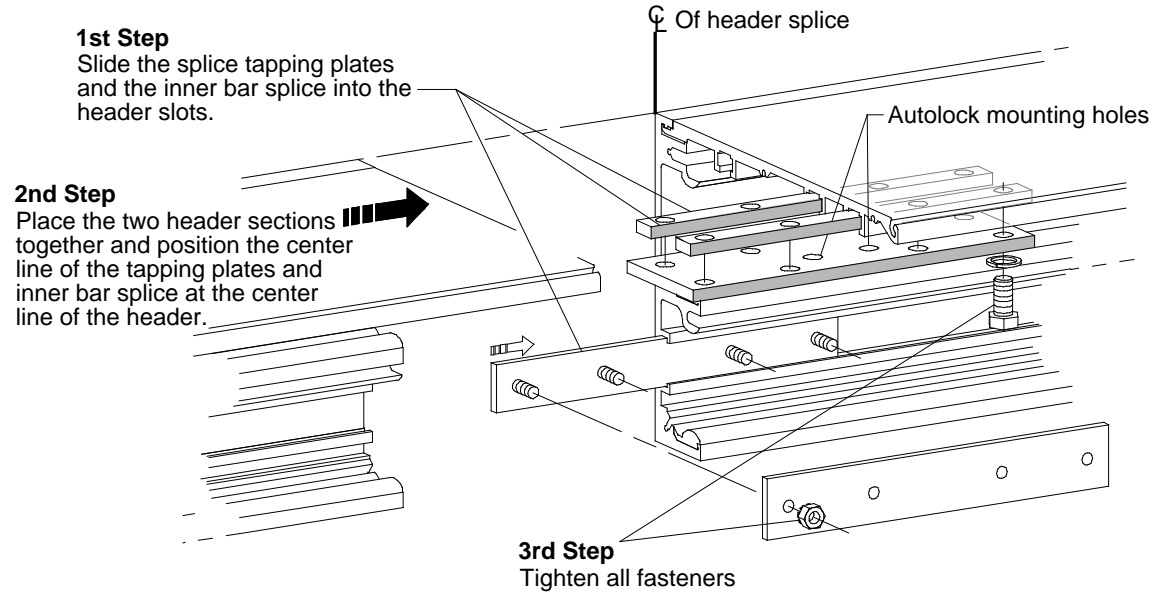
3. TRACK LOCATION

- The recess should be located as per the position of the door panels.
- The header and door panels should be mounted before the track is put in to position.



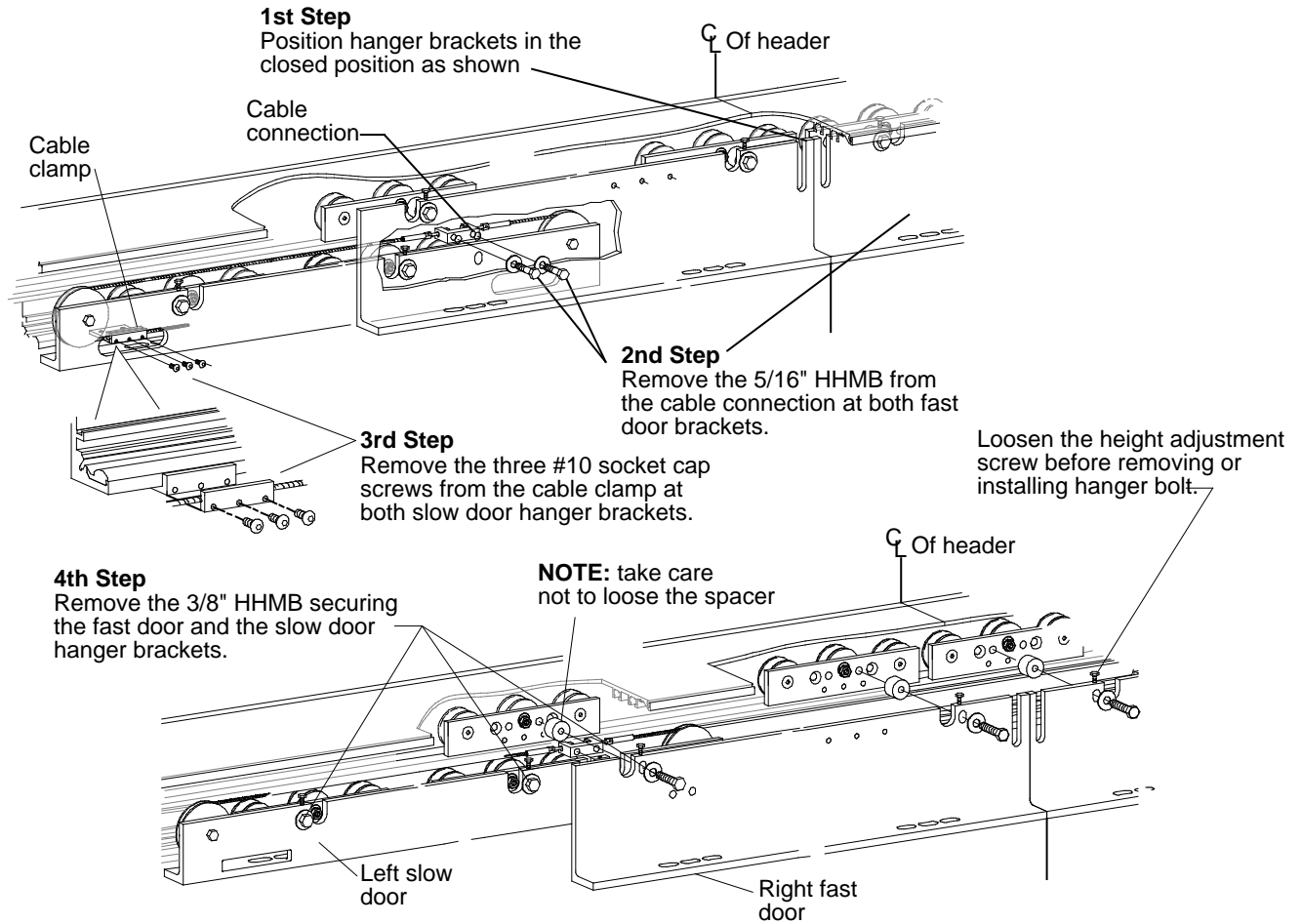
4. SPLICE

For large openings the header is shipped in 2 sections. They will require splicing.

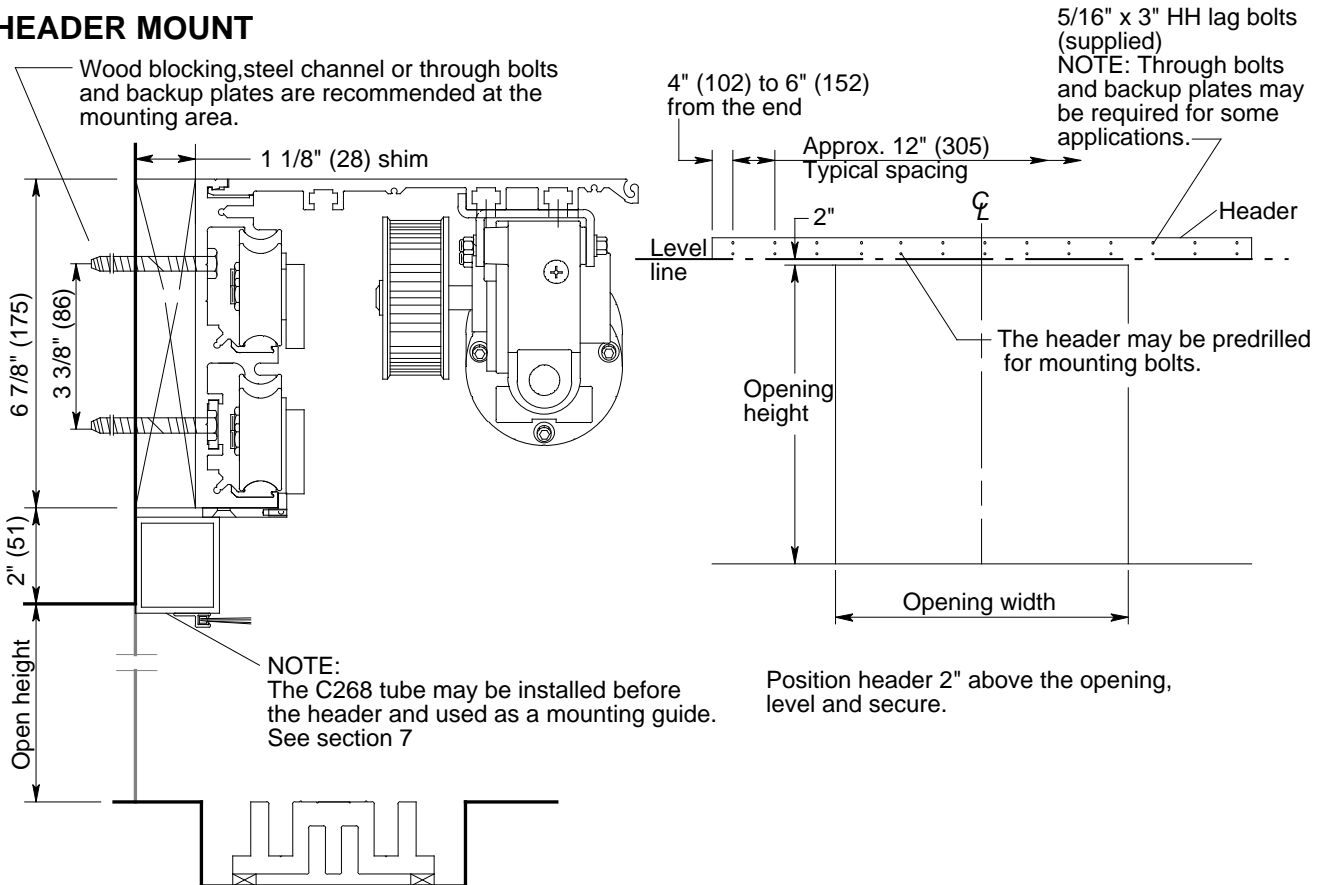


5.DOOR HANGER REMOVAL

Before the header is mounted the hangers should be removed and mounted on the door panels. Mark the left and right hangers so they can be remounted in the same position.

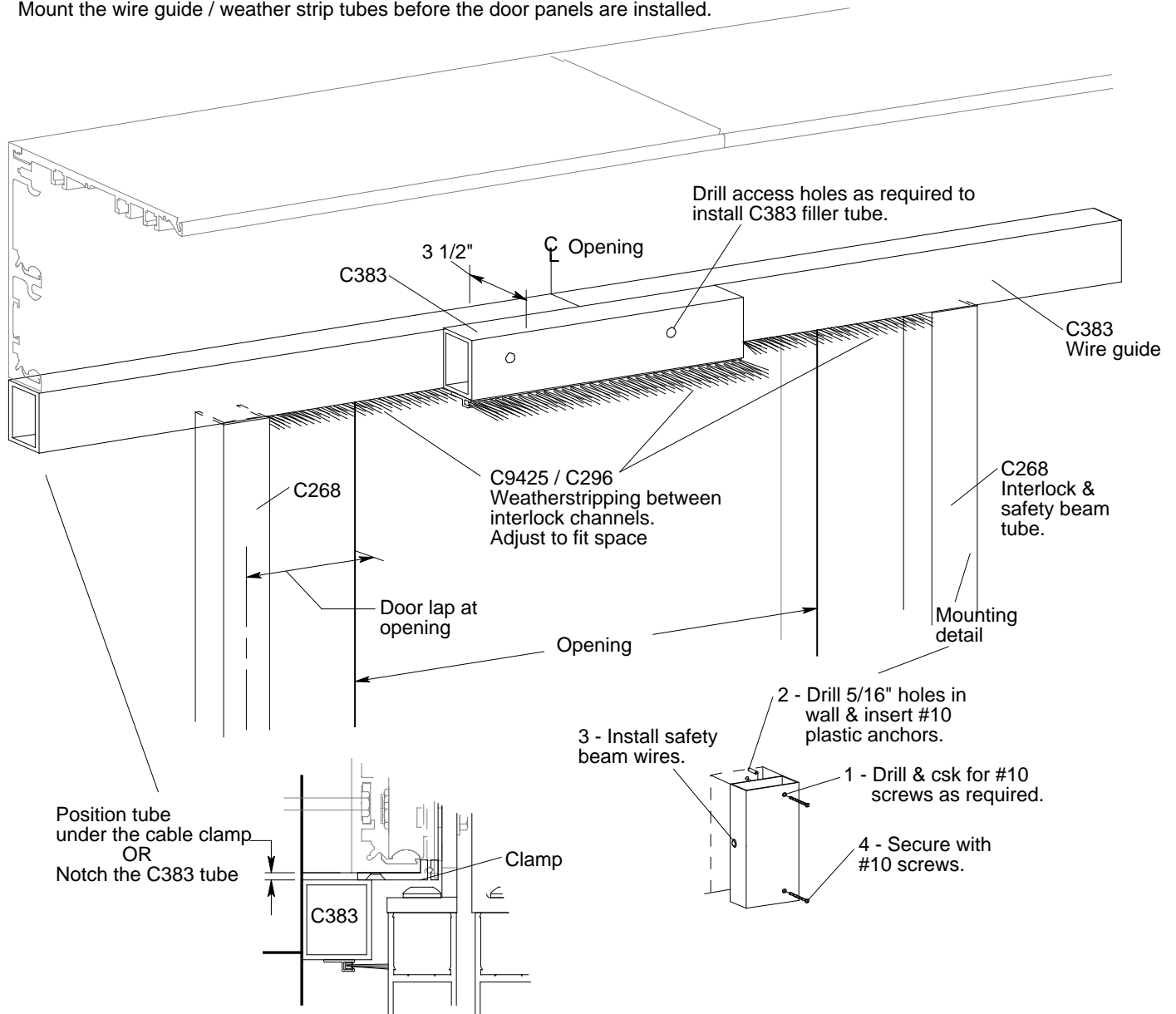


6.HEADER MOUNT

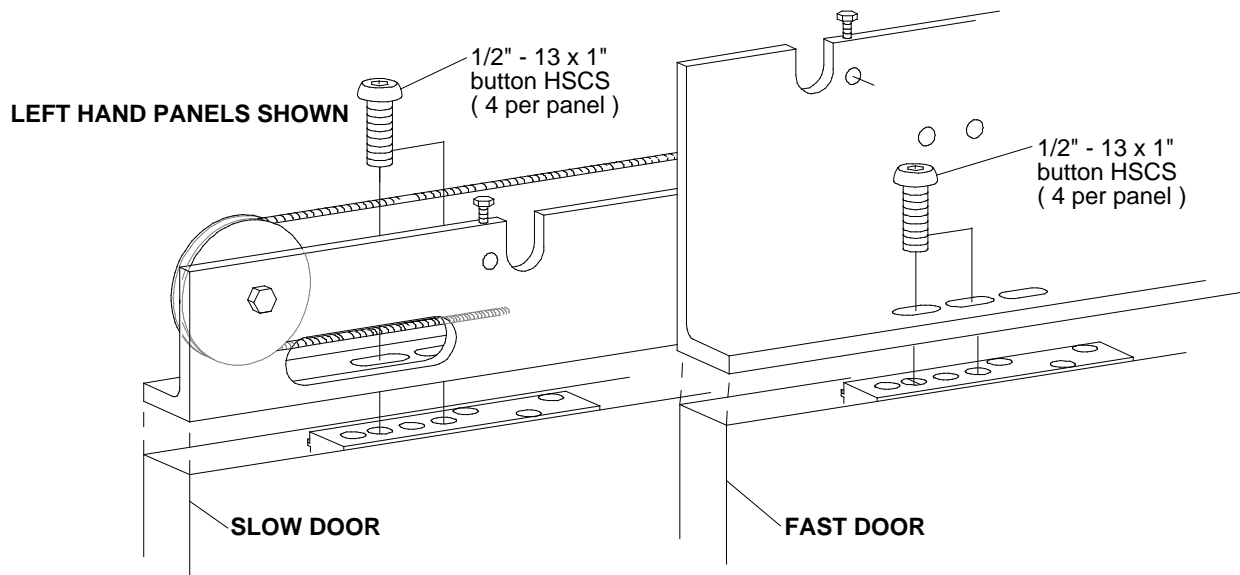


7. WIRE GUIDE / WEATHER STRIP MOUNT

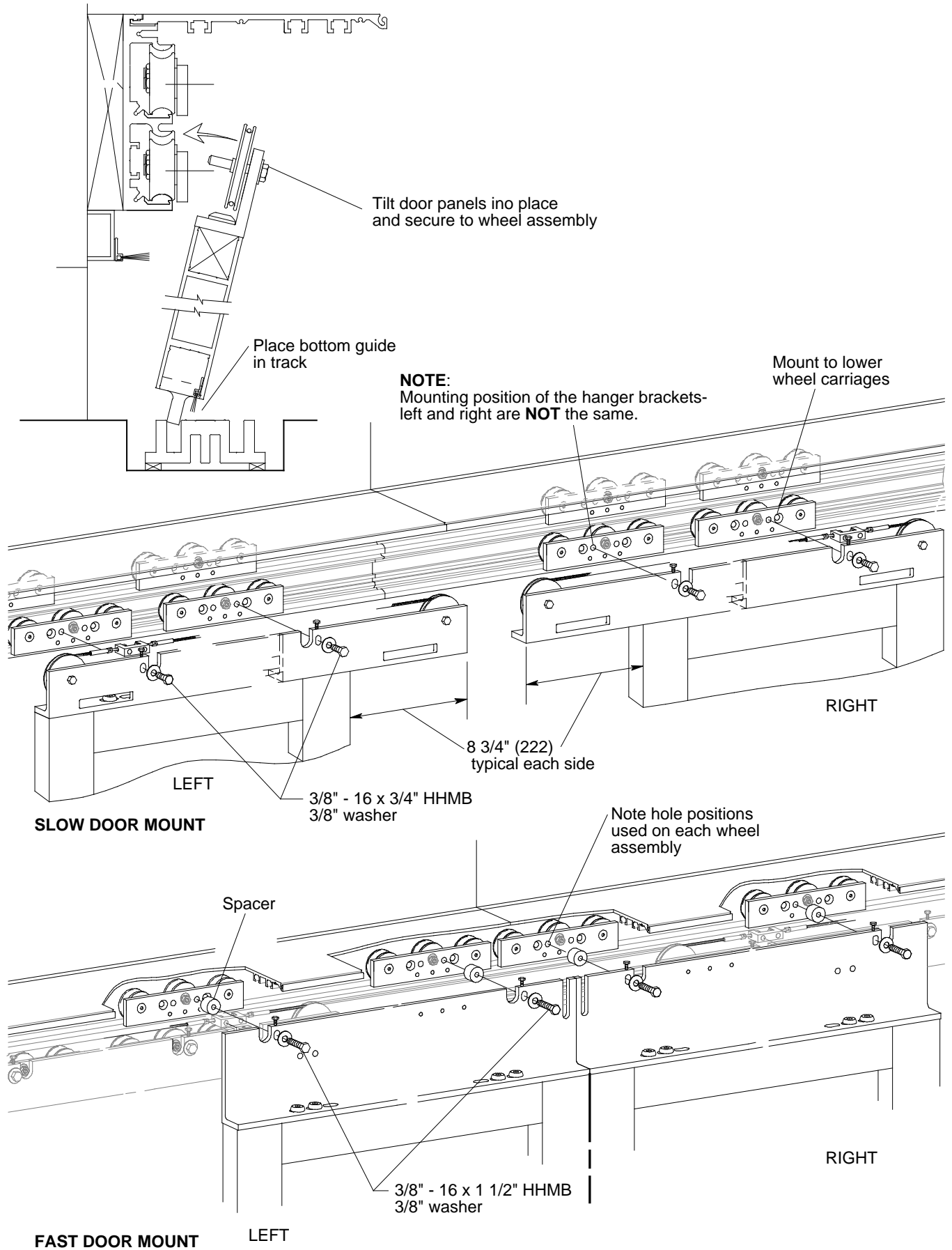
Mount the wire guide / weather strip tubes before the door panels are installed.



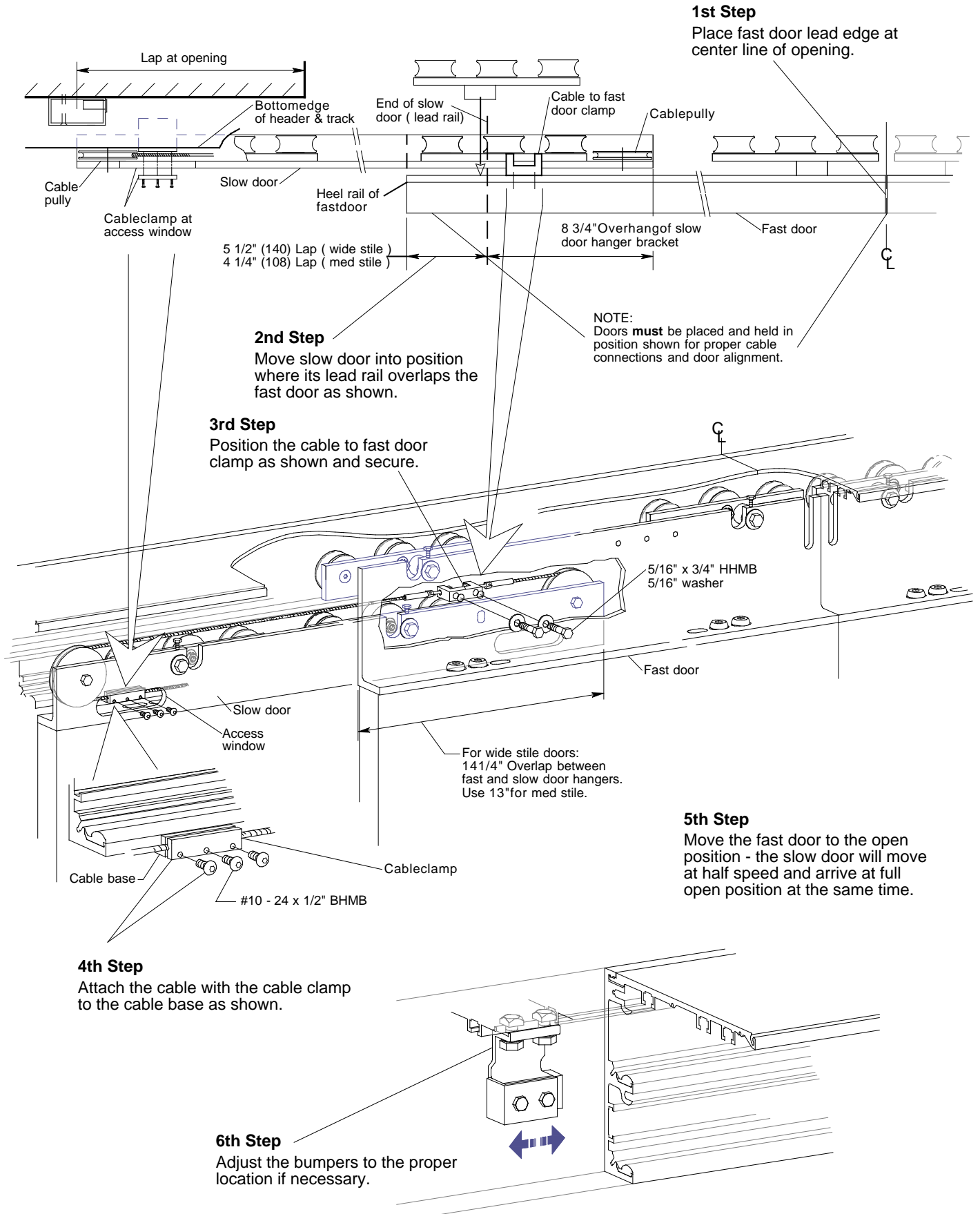
8. MOUNT HANGERS TO DOOR PANELS



9. MOUNTING DOOR PANELS

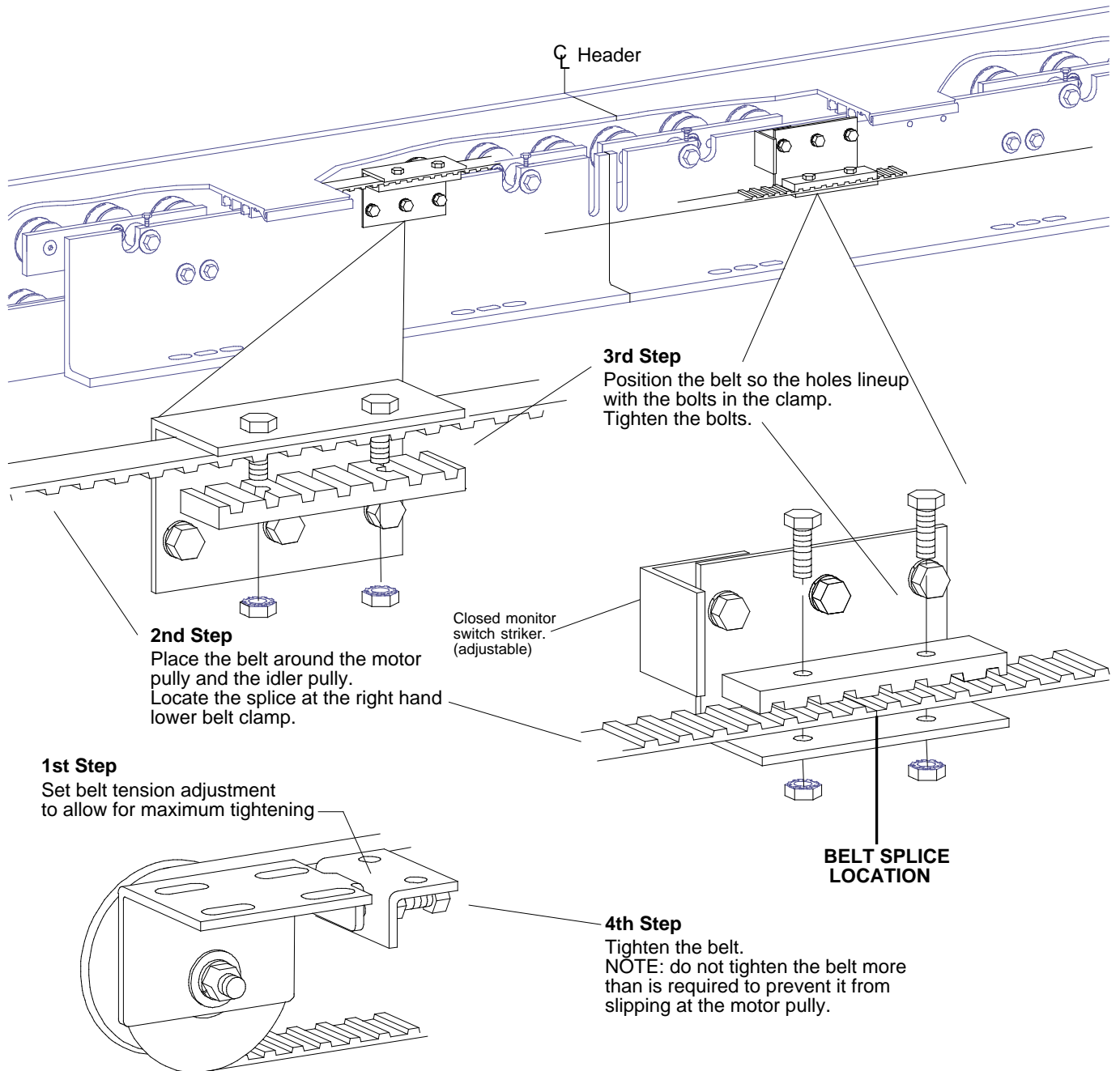


10. CABLE CONNECTION & DOOR ALIGNMENT

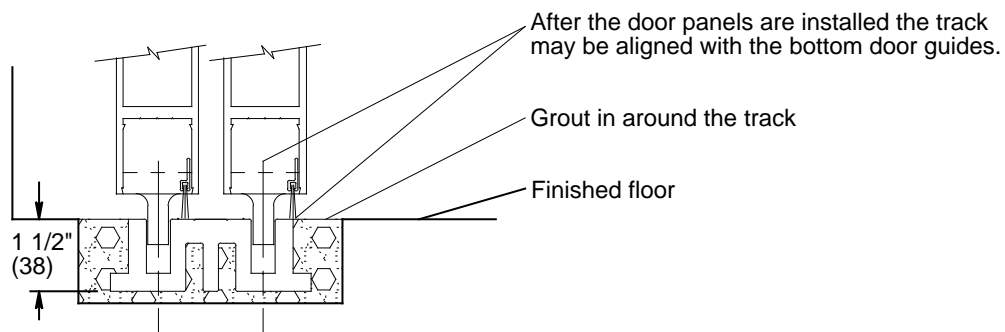


11. BELT CONNECTION

- Place the door in the closed position and aligned with the centerline of the header.
- The RIGHT HAND DOOR ATTACHES TO THE LOWER BELT.
- The LEFT HAND DOOR ATTACHES TO THE UPPER BELT.

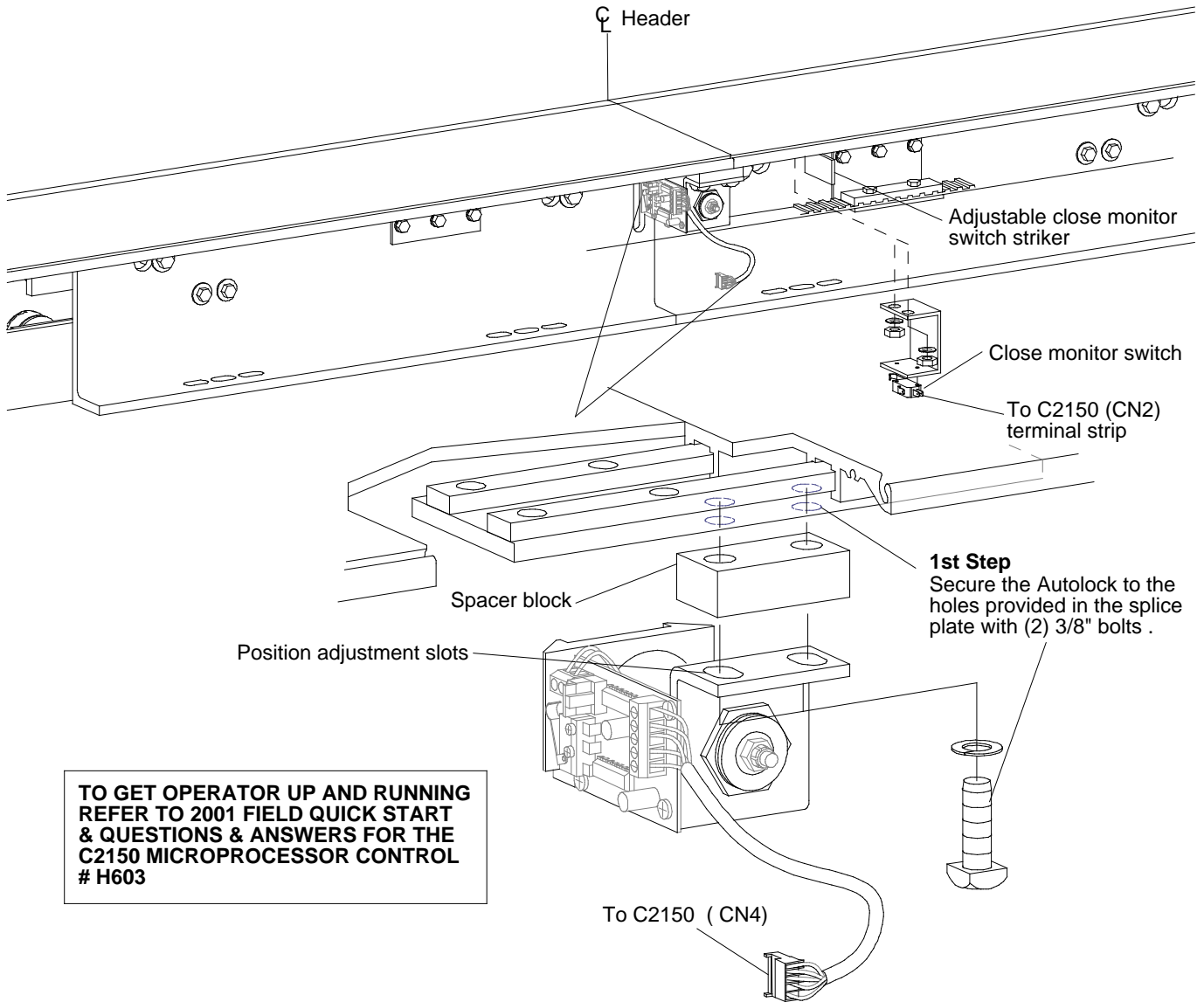


12. TRACK ALIGNMENT

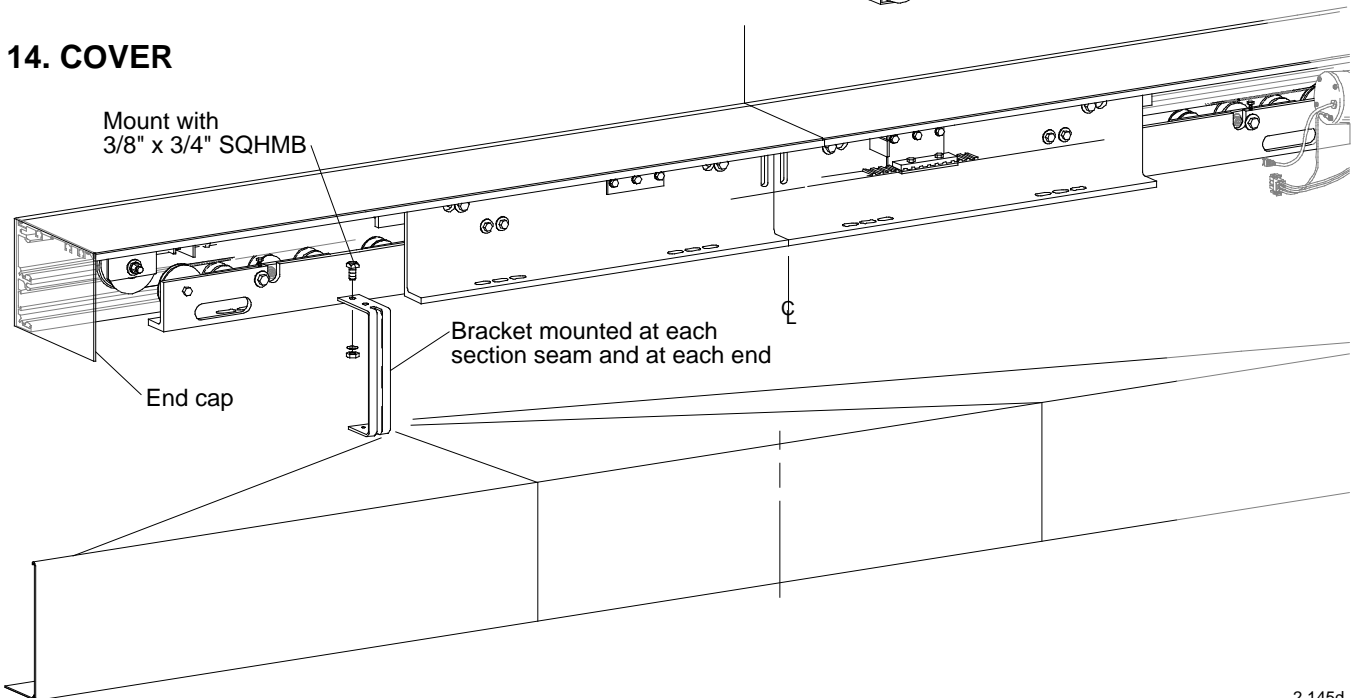


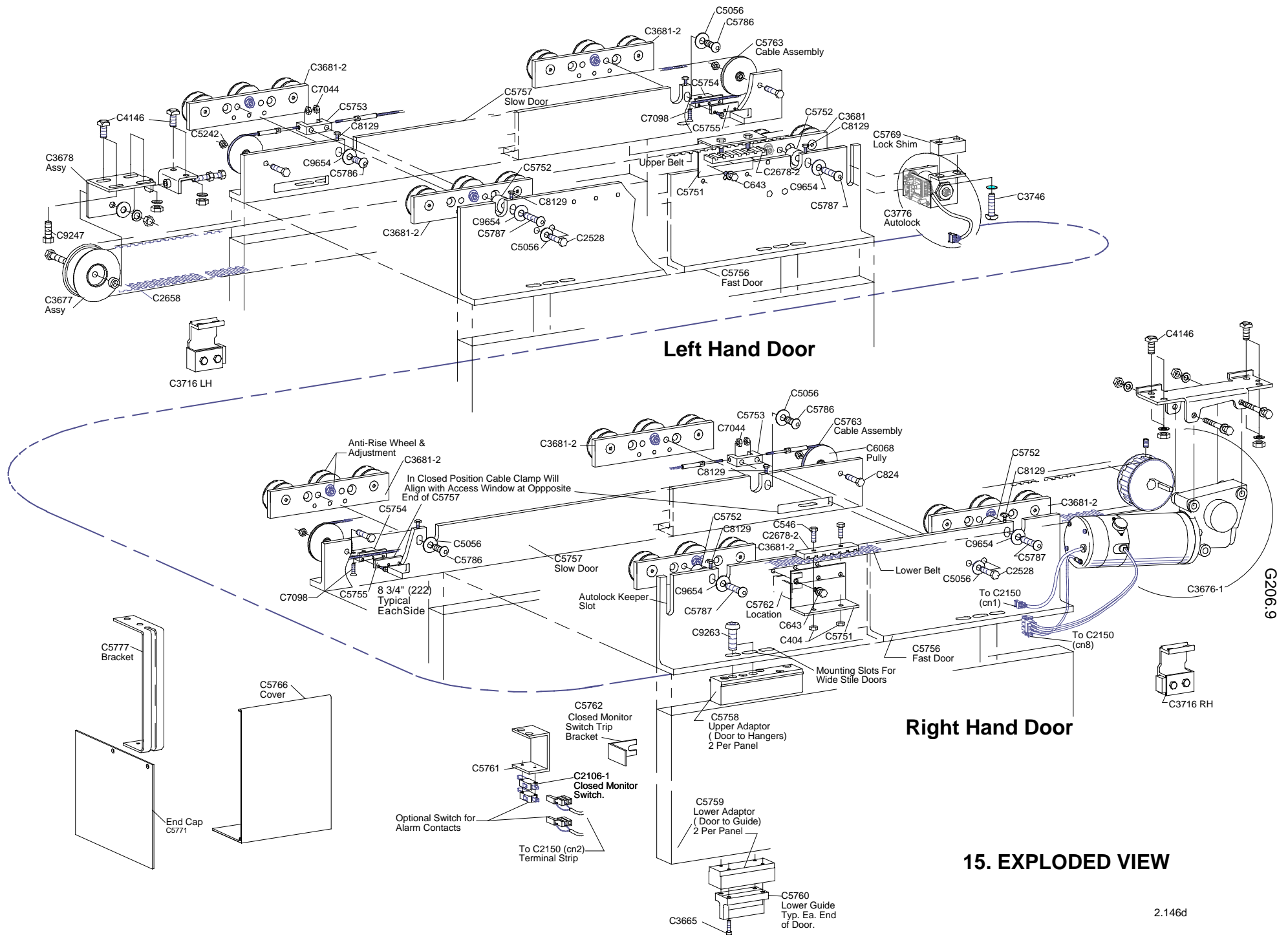
13. AUTOLOCK & CLOSE MONITOR SWITCH

If the Autolock did not come installed on the unit, follow the instructions below.



14. COVER





16. ACTIVATION and ADJUSTMENTS

See G2001, 2001 installation instructions (sections 10, 11 & 12) for safety beams and motion detectors.



A U T O M A T I C S
A Division of Overhead Door Corporation

4242 Baldwin Boulevard
Corpus Christi
Texas 78405-3399
800-531-3111
361-888-5591
Fax: 800-531-3108 361-888-6510

Internet: <http://www.hortondoors.com>

Horton Automatics, Ltd.
Unit A, Hortonwood 31
Telford, Shropshire
England TFI-4GS
01952 670169
Fax: 0192 670181
International Telephone ++44-1952 -670169
Fax: ++44-1952-670181

Form G206, 10/99
1998 Horton Automatics, printed in U.S.A.

Product equipment depicted in the various figure drawings are approximate and for illustration purposes only. Consult manufacturer for detail product specifications. Horton Automatics reserves the right to improve the product and change its specifications without notice.