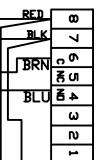
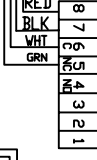


J1 0 0 0 0 0

SWINGPATH
SUPERSCAN



APPROACH
SUPERSCAN



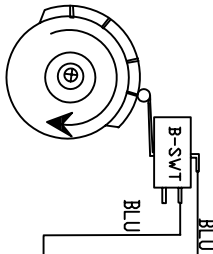
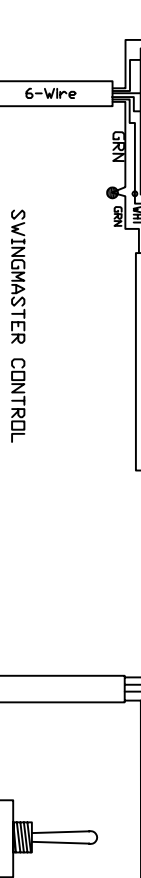
EAGLE SENSOR



NOTES:

J1 IS SET FOR NORMAL OPERATION.
J2 IS SET FOR ACTIVE RELAY.
P1 IS TURNED ALL THE WAY DOWN.

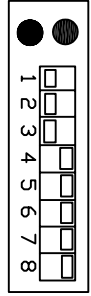
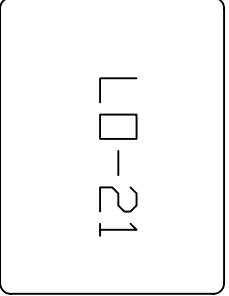
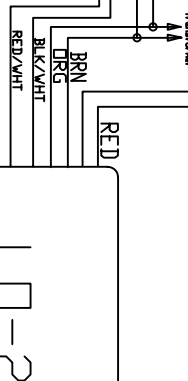
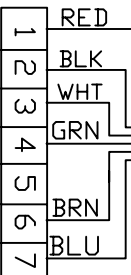
WITH J2 IN THE ACTIVE RELAY SETTING, THE RELAY WILL BE PULLED IN WHEN THE SUPERSCAN IS AT REST. BECAUSE OF THIS, THE OUTPUTS ARE WIRED BACKWARDS. TO GET A NORMALLY OPEN OUTPUT, YOU MUST USE THE NORMALLY CLOSED OUTPUT.



SET CAM TO TRIGGER
B-SWT @ 45 DEG.
CAM IS SHOWN WITH
DOOR @ 90 DEG.

FOR DUAL APPLICATION, B-SWT
FROM SECOND OPERATOR WILL
GO INTO #17 & 18. SUPER
SCANS FOR SECOND DOOR WILL
WIRED THE SAME EXCEPT WHITE
WIRE WILL GO INTO #17

BODYGUARD



ALL WIRES THAT ARE NOT USED ON THE
LD-21 NEED TO BE CAPPED OFF
INDIVIDUALLY.

RED L.E.D. INDICATES THE
LD-21 IS RECEIVING A
LOCK-OUT IMPULSE FROM
THE MOTOR.

GREEN L.E.D. INDICATES
THE SAFETY BEAM IS
TRIGGERED (IF USED).

IF THE BODY-GUARD IS LOCKED-OUT PROPERLY, THE
DOOR WILL PASS UNDER THE SENSOR WITHOUT ANY
LIGHTS COMING ON. TUNE THE BODY-GUARD WITH THE
DOOR CLOSED AND THEN WITH THE DOOR OPEN. IF THE
SENSITIVITY IS TO HIGH WITH THE DOOR OPEN, THE
BODY-GUARD SEES THE DOOR MOVE BEFORE THE
LOCK-OUT TAKES EFFECT.